

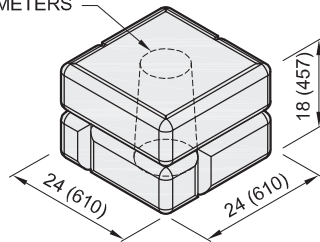
ACCESSORIES (COLUMN BLOCKS)

# Block Library

## COLUMN - 8" (203mm) CORE

Block Weight: 730 lb (330 kg)  
 Block Volume: 5.1 ft<sup>3</sup> (0.14 m<sup>3</sup>)

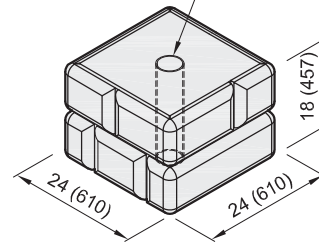
CENTERED THRU TAPERED HOLE  
 8-10 (200-250) DIAMETERS



## COLUMN - 4" (102mm) CORE

Block Weight: 810 lb (370 kg)  
 Block Volume: 5.6 ft<sup>3</sup> (0.16 m<sup>3</sup>)

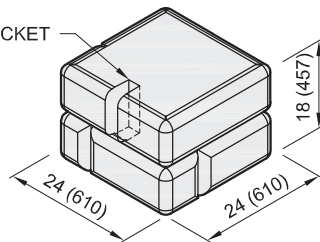
CENTERED 4 (102) DIAMETER  
 PVC PIPE SLEEVE THRU BLOCK



## COLUMN - SOLID CORE

Block Weight: 825 lb (375 kg)  
 Block Volume: 5.8 ft<sup>3</sup> (0.16 m<sup>3</sup>)

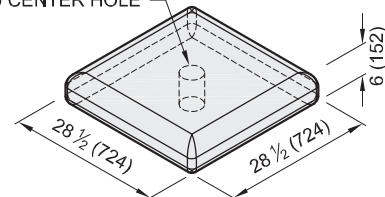
OPTIONAL FENCE POCKET



## COLUMN CAP

Block Weight: 390 lb (180 kg)  
 Block Volume: 2.7 ft<sup>3</sup> (0.08 m<sup>3</sup>)

OPTIONAL 4 (102) DIAMETER  
 THRU CENTER HOLE



1. Units for dimensions are inches (mm), typical unless noted otherwise.
2. Confirm block production with licensed Redi-Rock manufacturer.
3. Actual block volumes and weights may vary.
4. Weights are based upon a concrete density of 143 lb/ft<sup>3</sup> (2291 kg/m<sup>3</sup>).

5. Weight and volume ranges represents the blocks with the maximum hole size shown and with no hole.
6. Optional fence rail pockets available upon request. Typical pocket size is: 2 (50) wide x 5 (130) deep x 9 (230) tall.